

STEEL CYLINDERS

Center Hole Single Acting
12-100 Tons

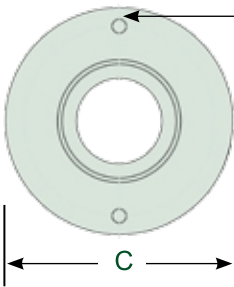


Due to damage caused by earthquakes and age, the roof of the Mission San Juan Capistrano was in need of repair. Twenty - four Simplex RC121 cylinders were used to transfer the load so repairs could be made.

SIMPLEX ADVANTAGES

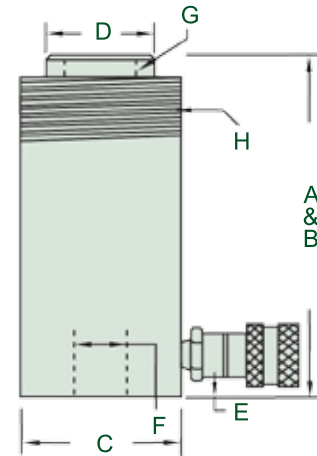
- 4 Double wipers protect against contamination.
- 4 Large center hole for greater flexibility.
- 4 Heavy Duty spring for fast retraction.
- 4 Designed for both push & pull forces.
- 4 Collar threads for easy fixturing.
- 4 Precision construction that prevents seal extrusion.

RC302 Shown
See table for additional models



Base Mounting Hole Dimensions

| Model | Bolt Circle (in) | Thread (in) | Thread Depth (in) |
|---------|------------------|---------------|-------------------|
| 12 Ton | 2.00 | 5/16 - 18 UNC | 5/16 |
| 20 Ton | 3.25 | 3/8 - 16 UNC | 7/16 |
| 30 Ton | 3.63 | 3/8 - 16 UNC | 3/8 |
| 60 Ton | 5.13 | 1/2 - 13 UNC | 7/16 |
| 100 Ton | ---- | ---- | --- |



Product Ordering & Dimensional Specifications

| Model | Cap. (tons) | Stroke (in) | Oil Cap. Req'd. (cu. in.) | Effect Area (sq. in.) | Pres. @ Cap. (psi) | A | B | C | D | E | F | G | | H | | Wgt. (lbs) |
|--------|-------------|-------------|---------------------------|-----------------------|--------------------|---------------|---------------|----------------|------------------|-----------------------|-----------------------|--------------------------|-------------------------|--------------------|-------------------------|------------|
| | | | | | | Min. Ht. (in) | Ext. Ht. (in) | Body O.D. (in) | Piston O.D. (in) | Base to Port C/L (in) | Center Hole Dia. (in) | Piston I.D. Threads (in) | Piston Thrd. Depth (in) | Collar Thrds. (in) | Collar Thrd. Lgth. (in) | |
| RC120 | 12 | 5/16 | .90 | 2.36 | 10,185 | 2 3/16 | 2 1/2 | 2 3/4 | 1 3/8 | 7/16 | 49/64 | 3/4-16 | 5/8 | 2 3/4-16 | 1 13/16 | 3.5 |
| RCQ120 | 12 | 5/16 | .90 | 2.36 | 10,185 | 2 3/16 | 2 1/2 | 2 3/4 | 1 3/8 | 7/16 | 49/64 | 3/4-10 | 5/8 | 2 3/4-16 | 1 13/16 | 3.5 |
| RC121 | 12 | 1 5/8 | 4.5 | 2.36 | 10,185 | 4 3/4 | 6 3/8 | 2 3/4 | 1 3/8 | 25/32 | 49/64 | --- | --- | 2 3/4-16 | 1 13/16 | 6.5 |
| RC1211 | 12 | 1 5/8 | 4.5 | 2.36 | 10,185 | 4 3/4 | 6 3/8 | 2 3/4 | 1 3/8 | 25/32 | 49/64 | 3/4-16 | 5/8 | 2 3/4-16 | 1 13/16 | 6.5 |
| RC123 | 12 | 3 | 8.3 | 2.36 | 10,185 | 7 1/4 | 10 1/4 | 2 3/4 | 1 3/8 | 25/32 | 49/64 | --- | --- | 2 3/4-16 | 1 13/16 | 10 |
| RC202 | 20 | 2 | 11 | 5.30 | 7,545 | 6 3/16 | 8 3/16 | 4 | 2 1/8 | 51/64 | 1 1/16 | 1 9/16-16 | 3/4 | 3 7/8-12 | 1 1/2 | 17 |
| RC206 | 20 | 6 | 32 | 5.30 | 7,545 | 11 3/16 | 17 3/16 | 4 | 2 1/8 | 51/64 | 1 1/16 | 1 9/16-16 | 3/4 | 3 7/8-12 | 1 1/2 | 31 |
| RC302 | 30 | 2 1/2 | 22 | 8.64 | 6,950 | 7 | 9 1/2 | 5 | 2 1/2 | 13/16 | 1 5/16 | 1 13/16-16 | 7/8 | 4 1/2-12 | 1 3/4 | 26 |
| RC306 | 30 | 6 1/8 | 64 | 8.64 | 6,950 | 12 1/4 | 18 3/8 | 5 | 2 1/2 | 13/16 | 1 5/16 | 1 13/16-16 | 7/8 | 4 1/2-12 | 1 3/4 | 52 |
| RC603 | 60 | 3 | 44 | 14.58 | 8,230 | 8 21/32 | 11 21/32 | 6 3/4 | 4 | 13/16 | 2 1/8 | 2 3/4-16 | 3/4 | 6 1/4-12 | 2 | 68 |
| RC606 | 60 | 6 | 88 | 14.58 | 8,230 | 12 21/32 | 18 21/32 | 6 3/4 | 4 | 13/16 | 2 1/8 | 2 3/4-16 | 3/4 | 6 1/4-12 | 2 | 80 |
| RC1003 | 100 | 3 | 62 | 20.60 | 9,700 | 9 | 12 | 8 1/4 | 5 | 1 | 3 1/8 | 4-16 | 1 | --- | --- | 99 |

